



2021-22 NEW ARRIVALS

CAREER COLLECTIONS

Edwards®

edwardsgarment.com

TREND REPORT

Fabric & Color



PANTONE®
19-4342 TCX
Seaport



PANTONE®
17-5104 TCX
Ultimate Gray



PANTONE®
19-3838 TCX
Rhodonite



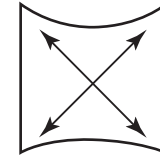
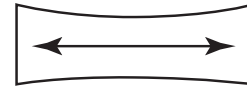
PANTONE®
19-2428 TCX
Magenta Purple



PANTONE®
19-3940 TCX
Blue Depths



PANTONE®
16-3916 TCX
Sleet



2-Way & 4-Way
Stretch Fabrics



Recycled
Content



Soft Double Knits for Full
Coverage & Added Durability

Durable Twill Fabrics that can Uphold
After Several Washes

TREND REPORT

Bottoms



Slim Leg from Knee to Ankle



2-Way Stretch
Fabrics



Tailored
Looks with
a Straight
Leg



LADIES' PONTE KNIT PANT & SHEATH DRESS

8571/9935

COLOR
Black

SIZING
8571: 0-28, Scale 0,
(Inseams: S-28", R-30", T-32")
9935: 0-32, Scale 0

- 72% Polyester/24% Rayon/
4% Spandex
- 8571: Slim Fit
9935: Tailored Fit
- 9935: Scoop Neckline, $\frac{3}{4}$
length sleeves, front princess
seams and back darts



FLEX CHINO PANTS

2583/8583

COLORS

Black, True Navy, Ash Grey

SIZING

2583: 28-54, Scale H

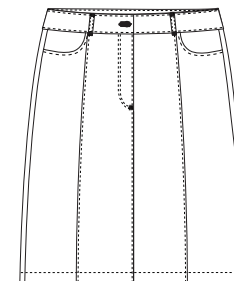
8583: 0-32, Scale 0

- 95% Nylon/5% Spandex
Textured Canvas
- Tailored Fit
- Traditional waistband with beltloops
- Metal Zipper and antique silver button

Walking video



In the works:
Ladies' Skirt





EZ Fit Utility Chino Pants #2540/8540

Hardworking, durable, soil release fabric

EZ Fit waistband provides an additional two inches of adjustment

Men's Sizes: 28-60, Scale H | Ladies' Sizes: 00-32, Scale O

Colors: Tan, Navy, Black, Coal

RETAIL PRICING: Starting at \$34.50



Men's Pleated Front Utility Chino Short #2439

Hardworking, durable, soil release fabric

Men's Sizes: 28-60, Scale H

Colors: Tan, Navy, Black, Coal

RETAIL PRICING: Starting at \$27.00

ULTRA-STRETCH SUSTAINABLE SHIRTS

#1996/5296

COLORS

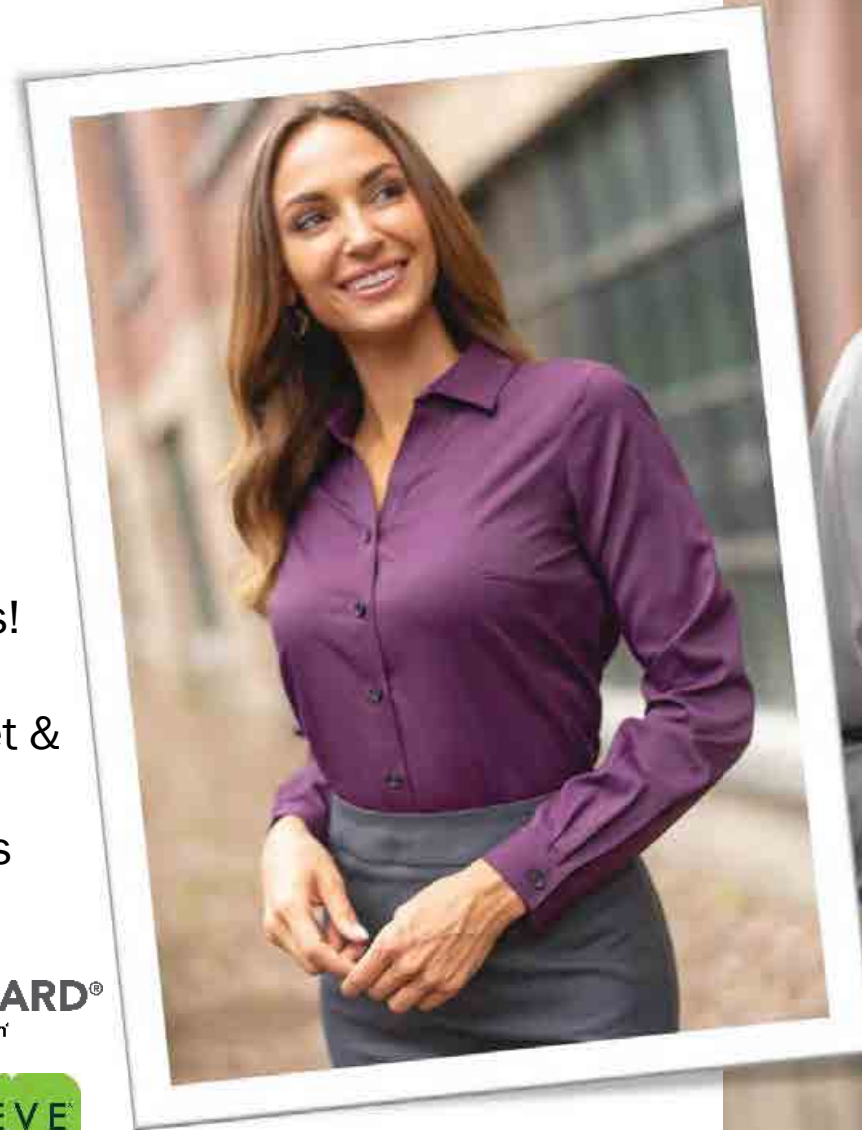
Black, Eggplant, Titanium

SIZING

Men's Sizes: S-3XL, LT-6XLT, Scale H

Ladies' Sizes: XXS-4XL, Scale O

- Bioguard® antimicrobial technology
- Repreve® recycled polyester – 4 bottles!
- Moisture management
- Men's has spread collar, French placket & back darts
- Ladies' has open neckline & back darts



DRESS LAPEL VESTS

#4496/7496

COLORS

Black, Dark Navy, Steel Grey

SIZING

Men's Sizes: S-5XL, Scale H

Ladies' Sizes: XS-4XL, Scale O

- Two functional front pockets
- V-notch bottom detail
- Adjustable back strap
- Fully lined



MINI-PIQUE SNAG-PROOF POLOS

#1507/1527/5507

COLORS

White, Black, Red, Royal, French Blue, Steel Grey, Marina Blue (new),
High Visibility Lime (SS only), High Visibility Orange (SS only), Bright Navy, Cool Grey

SIZING

Men's Sizes: S-3XL, 4XLT-6XLT, Scale H

Ladies' Sizes: XXS-4XL, Scale O

Unisex Sizes: XXS-3XL, 4XLT-6XLT, Scale V

- Budget-friendly polo!
- Snag-Proof
- Moisture wicking
- Hemmed bottom and sleeves



TREND REPORT

Outerwear



Multiple Pockets
with
Zip Closures



Recycled
Insulation

Water-
Resistant
Finish



Seaming
for a more
Flattering
Fit

Packable
for easy
travel



SWEATER KNIT FLEECE JACKETS & VESTS

#3460/6460, #3463/6463

COLORS

Athletic Grey Heather, Blue Heather, Black Heather

SIZING

Men's Sizes: S-6XL, Scale H

Ladies' Sizes: XS-4XL, Scale O

- Easy care
- Soft fleece fibers trap heat
- Full-zip front
- Two lower side pockets
- Right chest pocket (ladies' jacket has left bicep pocket)



PUFFER PACKABLE JACKET

#3453

COLORS

Navy, Black, Steel Grey

SIZING

Unisex Sizes: XS-6XL, Scale V

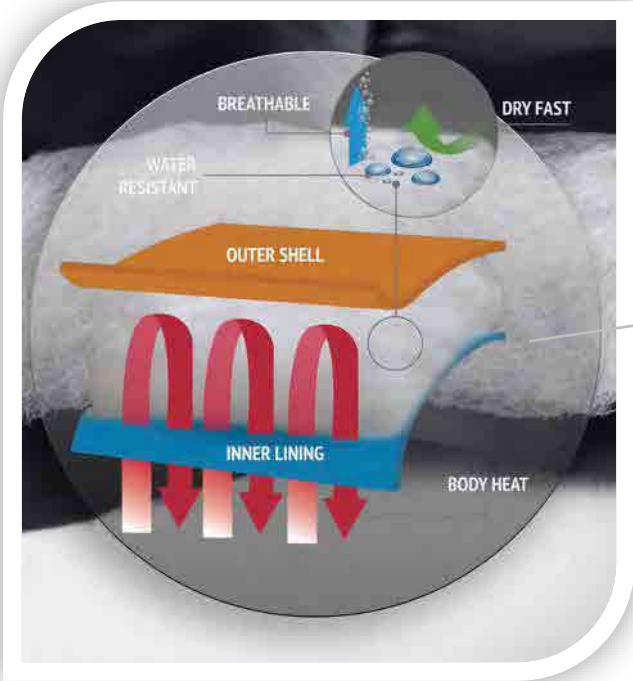
- Polyloft® insulation made from 12 bottles!
- Nylon shell
- Open single welt pockets
- Bound sleeve opening and bottom opening

POLYLOFT®


Comes with bag for packing










A DEEPER LOOK AT POLYLOFT® SUSTAINABILITY



INSULATION MADE FROM 12 RECYCLED BOTTLES



 WARMTH	 WIND RESISTANT	 LIGHTWEIGHT & COMPRESSIBLE	 SUSTAINABLE TECHNOLOGY	 WATER RESISTANT	 BREATHABILITY
---	--	--	--	---	--



POLYLOFT® 100% RECYCLED POLYESTER



NEW STYLES E-CATALOG

LEARN MORE ABOUT OUR NEW STYLES!

- Dress Shirts
- Polos
- Ponte Styles
- Pants & Shorts
- Outerwear
- Vests

[VIEW NOW](#)



Want Samples?

Contact Your Edwards Territory Manager Today!
edwardsgarment.com / 800.253.9885

Edwards®