

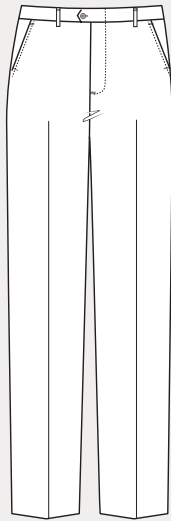
# FIND YOUR FIT

Our garments are cut to three standard fits for more uniform sizing. See individual product descriptions.

## SLIM



Modern silhouette with a slim cut to fit close to the body and chest, narrow sleeves, tapered through the waist

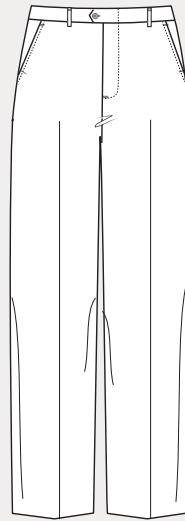


Sits below waist, closest fit to body, tapered through hip, seat and thigh, straight or tapered leg opening and flat front

## TAILORED

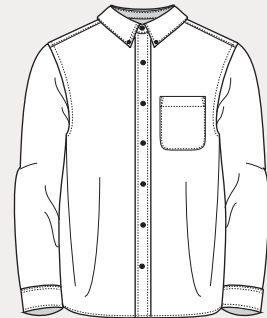


Classic silhouette with a trim cut through the body and chest, trim sleeves

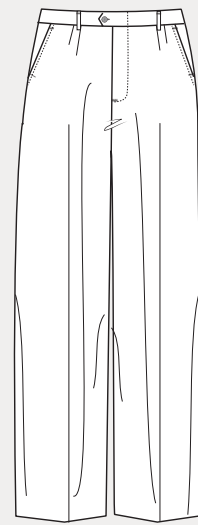


Sits slightly below waist, fitted through hip, seat and thigh, straight or tapered leg opening and flat front

## TRADITIONAL



Full silhouette with a generous cut and more room in the body, chest, waist and sleeves



Sits at waist or slightly below the waist, relaxed through hip, seat and thigh, straight leg opening, pleated and flat front